

Assembly Manual

LED working light (7091.25)

Introduction

Foreword

The installation procedures described in this assembly manual should only be undertaken by a Hako service centre or a workshop authorised by Hako. Members of staff with the required level of training and expertise are only guaranteed in the said workshops. This assembly manual may be used only in conjunction with the operating manual of the machine.

Safety instructions

Please observe the general safety regulations of the corresponding machine in the relevant operating manual.

Place the machine on a level surface and secure it with the parking brake. Switch the machine off and pull out the key.

We would expressly advise you that no legal claims may be asserted based on the contents of this manual. In the case of necessary repair work, please make sure that only original spare parts are used. Only original spare parts guarantee constant and reliable operational readiness of your machine. We reserve the right to make changes in the interests of further technical development.

Valid as from: September 2017

Hako GmbH
23843 Bad Oldesloe, Germany
Hamburger Str. 209-239
Phone +49 4531 806-0

1 LED working light

1.1 Parts list

- 1x LED working light compl.
- 1x flanged button head bolt M5x12 (Torx)
- 1x corrugated hose holder

1.2 Before installation

1. Place the machine on a level surface and turn it off.
2. Open the seat console.
3. Remove the bolts of the cover (Fig. 1/4).
4. Remove floor mat in footwell.
5. Remove floor plate (Fig. 1/5).



Fig. 1

LED working light

1.3 Installing the working light

The working light is installed on the left next to the front wheel (Fig. 2/1).

1. Screw flanged button head bolt M5x12 (Torx) with working light into existing hole (Fig. 2/2).
2. Insert corrugated hose holder into existing hole (Fig. 2/3).
3. Secure cable of working light to corrugated hose holder in such a way that it is free of tension.
4. Lead cable through floor opening into the electronics area (Fig. 2/4).
5. Connect plug of working light (Fig. 2/5) to 2-pin connector E01 of cable loom W 2 (Fig. 2/6).

1.4 Adjusting the working light

Align working light so that it is straight-ahead in the direction of travel. Adjust tilt in accordance with required floor illumination.

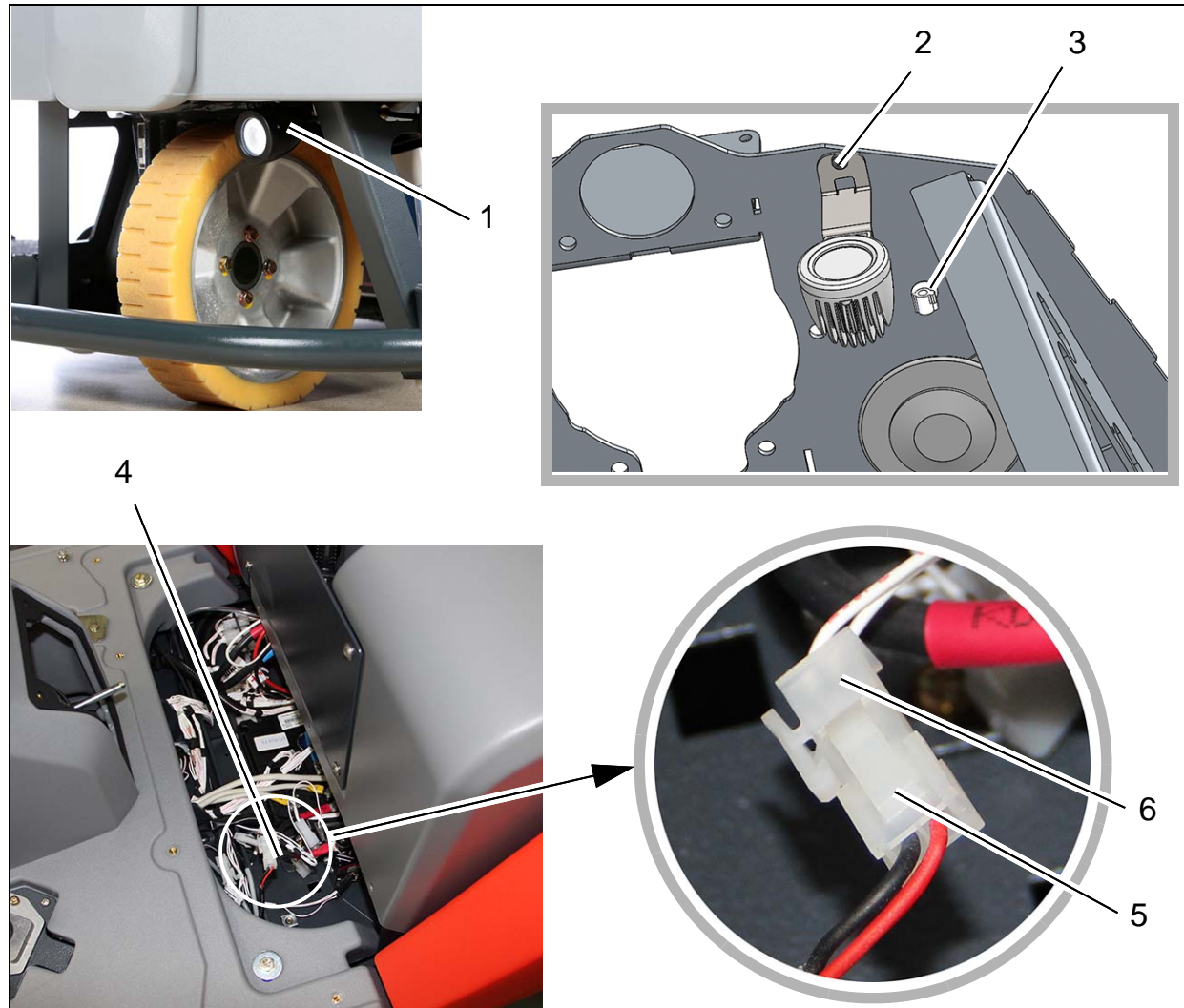


Fig. 2

1.5 Configuration menu

The LED working light option must be activated via the configuration menu.

Value for LED working light:

Option	A. B. _ C.
LED working light	1. 6. _ 1.

A = Chapter

B = Configuration

C = Content

1.5.1 Button assignment

Button 1 (Fig. 3/T1):

Toggle between menu items **A**, **B** and **C**.

Button 2 (Fig. 3/T2):

Change the values in the respective menu item.

Button 3 (Fig. 3/T3):

Save the changed value.

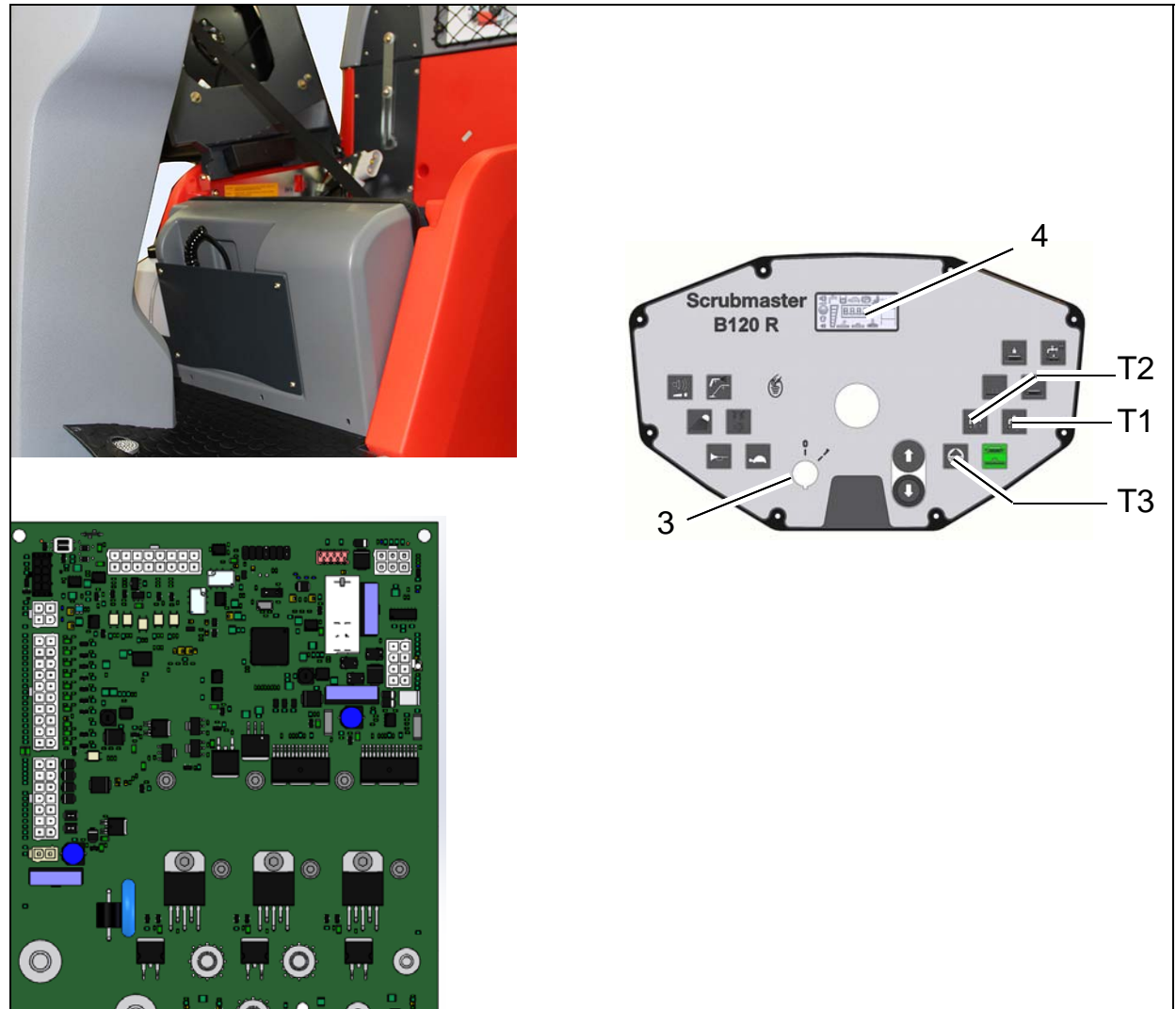


Fig. 3

LED working light

1.5.2 Setting in the Configuration menu

Requirements:

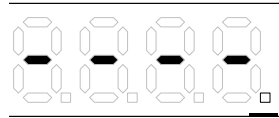
- Batteries inserted
- Diagnosis plug 97097737 available

Preparation:

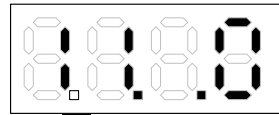
1. Place the machine on a level surface and hold it with the parking brake.
2. Open the seat console.
3. Remove the bolts of the cover.
4. Carefully remove the cover from the front, ensuring that the plug of the on-board charger is not pulled out.
5. Connect diagnosis plug 97097737 to plug A1.X3 (Fig. 3/2) of the control electronics A1.

Setting:

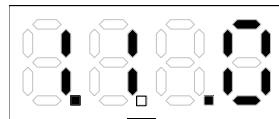
1. Open the configuration menu:
Press buttons 1 and 2 simultaneously, switch on the key switch (Fig. 3/3) and hold for 3 seconds. The right-hand dot flashes in the indicator (Fig. 3/4):



2. Press button 2 twice.
The chapter is now set to 1. The dot next to 1 flashes:



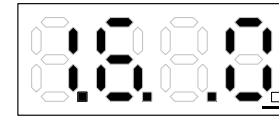
3. Press button 1 twice.
The dot to the right of configuration 1 flashes:



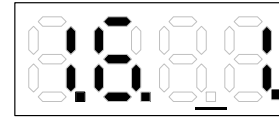
4. Press button 2 five times.
The configuration changes to 6:



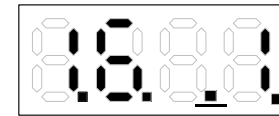
5. Press button 1 once.
The dot to the right of the content 0 flashes:



6. Press button 2 once.
The content changes to 1. The dot to the left of the content goes off.



7. Press and hold button 3 for 3 seconds to save the setting. The dot to the left of the content appears.



8. Remove the diagnosis plug from the control electronics and reattach the cover.

Hako

Clean ahead

Advanced Technology for a Cleaner, Better Environment

88-10-3125 - 3650-36



Hako GmbH ▪ Head Office ▪ Hamburger Str. 209-239 ▪ 23843 Bad Oldesloe ▪ Germany
Phone +49 4531 806-0 ▪ Fax +49 4531 806-338